

SNOW LEOPARD TRUST

2022 IMPACT REPORT



YOUR SUPPORT IN ACTION





OUR MISSION

Snow Leopard Trust aims to better understand and protect the endangered snow leopard in partnership with the local and indigenous communities who share its habitat.

THE SNOW LEOPARD BUTTERFLY EFFECT

LETTER FROM THE DIRECTOR

The far-away flapping of a single butterfly can trigger a hurricane in another part of the world. This is the metaphorical 'butterfly effect' in chaos theory.

I find this evocative image a perfect metaphor for conservation. A passing ambitious thought, if nurtured and supported, can trigger a conservation movement. A seemingly small gesture can lead to a groundswell of positive impact for nature and biodiversity across the planet. I call this the 'snow leopard butterfly effect'.

With immense pleasure, I bring you our 2022 Impact Report. I hope you'll be as inspired as I am to see what your generosity is enabling. You are ensuring a future for snow leopards and their critically important home of glaciers and snow, known as the Third Pole. You are supporting the well-being of local and indigenous communities. You are nurturing their leadership in conservation, helping them adapt to climate change and coexist with snow

leopards. You are enabling cutting-edge research that is so critical for conservation.

Whether it was through your generous donations, Team Snow Leopard memberships, purchases of handicrafts made by women in our partner communities or turning up at the Strides for Snow Leopards event from dozens of countries, your actions made a difference.

You, our amazing supporter, are the graceful butterfly. You are helping snow leopards and igniting a global movement in ethical nature conservation. I am so full of gratitude to you for the flapping of your wings. Together, we are whipping up a beautiful storm. For snow leopards and for a better planet.

With heartfelt thanks,



Dr. Charudutt Mishra, Executive Director



WHAT YOU MADE POSSIBLE

2022 Snapshot



159

Local and indigenous communities partnering with us to protect snow leopards



35

Individual snow leopards collared and their movements tracked in our Long-Term Ecological Study (3 new cats collared in 2022)



65,000

Square kilometers surveyed by GSLEP partners across the snow leopard range in 2022

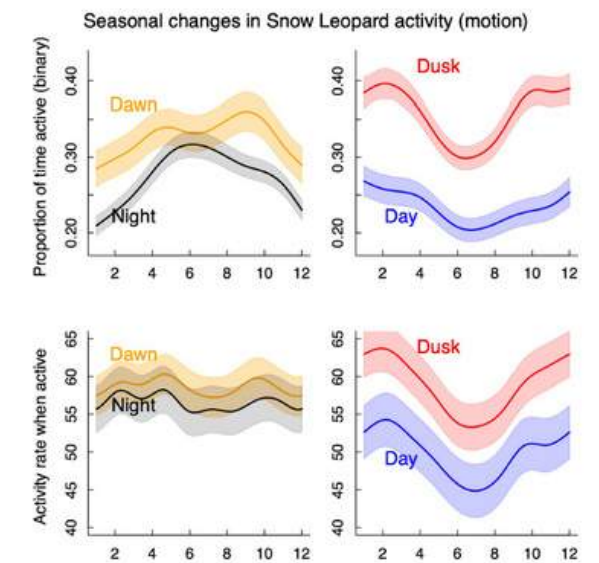
1,200

Children in snow leopard landscapes inspired through our conservation education programs

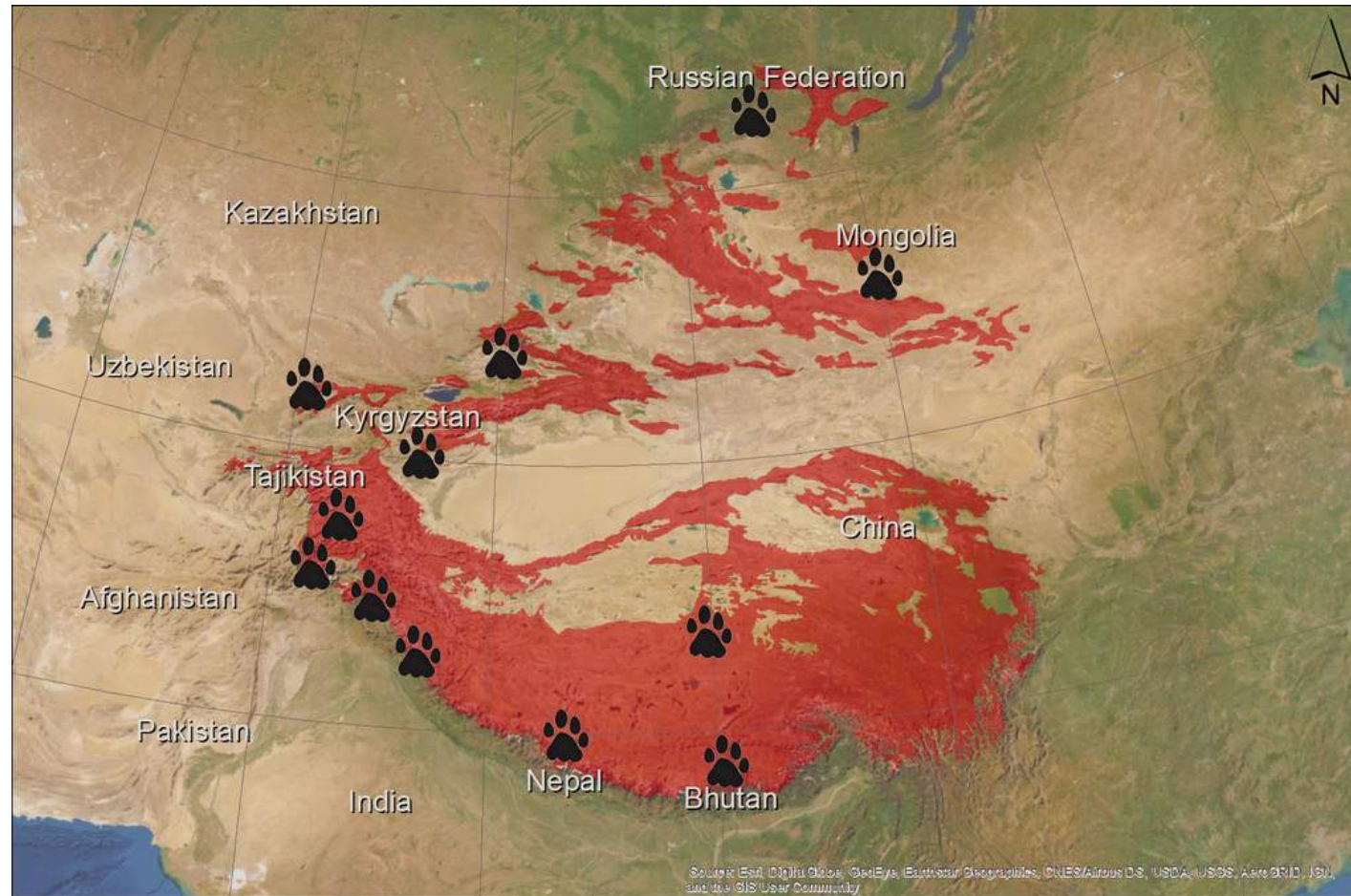


28

Papers published by our researchers in international science journals



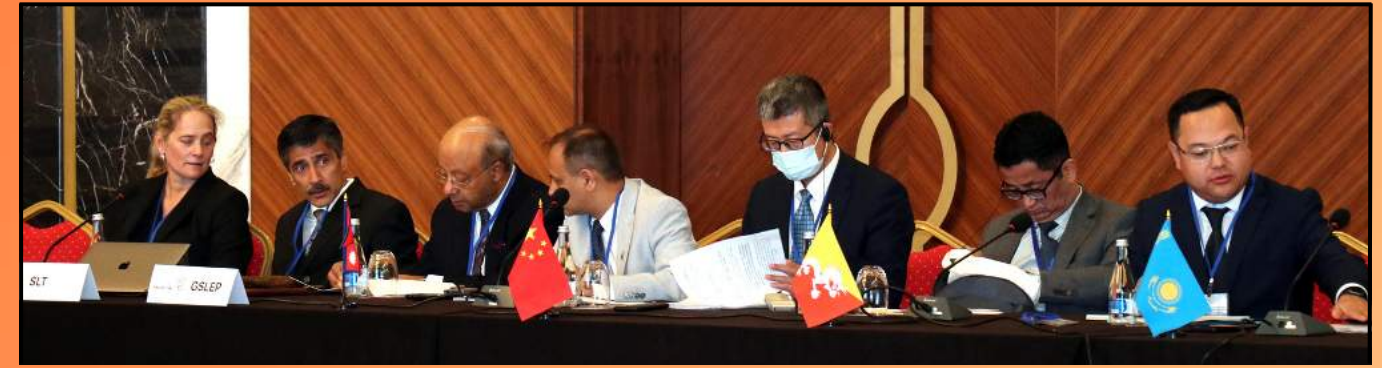
PROTECTING SNOW LEOPARDS ACROSS THE THIRD POLE



Your Impact in Snow Leopard Habitat

Just as the polar bear is inextricably linked to the North Pole and the Arctic Ocean, the snow leopard is bound to Asia's high mountain ranges, known as **the Third Pole**. Climate change is expected to severely affect this region, threatening both snow leopards and the communities living alongside them. Our research to understand how this mountain-dwelling species will be affected by a warming climate is critical to developing solutions to protect it.

With your support, we continue to work with partners in all snow leopard range countries to facilitate on-the-ground research, conservation and climate adaptation initiatives, education programs and policy-level interventions to conserve snow leopards and their habitat.



BRINGING GOVERNMENTS TOGETHER FOR STRONGER CONSERVATION POLICIES

Snow leopards have the power to unite people and bring nations together.

On International Snow Leopard Day, October 23rd, 2022, environment ministers and senior officials from 10 of the 12 snow leopard range countries came together to review progress in snow leopard conservation.

The Global Snow Leopard and Ecosystem Protection Program (GSLEP) is a first-of-its-kind intergovernmental alliance comprised of environment ministers from all snow leopard range countries. Snow Leopard Trust was instrumental in creating and supporting this path-breaking model of cooperative nature conservation. Under this alliance, **governments have committed to enhancing conservation measures for 25% of the total snow leopard habitat across Asia.**

Governments have the authority to bring about some balance between the needs of nature conservation and economic development. We are committed to working with and supporting them to strengthen national conservation policies and international cooperation to ensure a future for snow leopards.

PROGRAMS AT A GLANCE



Long-term Research

Our team of world-class scientists conducts research to improve our understanding of snow leopard ecology, its prey, its relationships with local and indigenous people, their cultures, and socio-economic, health and value systems to design and implement effective conservation strategies.



Nature Connections for Adults & Children

Our educational programs foster a deeper understanding and appreciation for the natural world. They engage and inspire people of all ages to take action and become proud stewards of snow leopards and their habitat.



Conservation Training

We support conservationists, rangers and local community champions working on the frontlines by providing resources and training in conservation management, wildlife monitoring, law enforcement and ethical community engagement.



Community Partnerships

The local and indigenous communities living in snow leopard habitat are vital conservation allies. Respectful, long-term engagement with them to promote ethical conservation solutions leads to more effective and sustainable outcomes.



Intergovernmental Cooperation

Snow Leopard Trust collaborates with governments in snow leopard range countries, co-designing strategies and policies to protect snow leopards and their mountain ecosystems.



Towards Sustainable Economies

EqualOne is our pilot initiative which aims to build a network of organizations, corporations and individuals working to support community-centric economic development for snow leopard conservation. It is a collaboration with entrepreneurs from local communities. Our partners include the United Nations Environment Program, The Whitley Fund for Nature and the Global Snow Leopard and Ecosystem Protection Program.

SNOW LEOPARD CONSERVATION IN A CHANGING WORLD

NEGOTIATING IMPACTS OF CLIMATE CHANGE

The lives of snow leopards and the indigenous peoples of High Asia are as intertwined with glaciers and snow as they are with each other. Known as Earth's Third Pole, this unique part of the planet they share is estimated to be warming two times faster than the Northern Hemisphere. **To ensure snow leopards roam these peaks for generations to come, we must prepare for a future when the snow melts.**

Snow Leopard Trust's climate adaptation programs help local and indigenous communities diversify their livelihood options, catalyze better disease and healthcare management in people, livestock and wildlife and strengthen peoples' ability to coexist with snow leopards and other biodiversity.



20% of snow leopard-friendly beekeeping profits in Kyrgyzstan fund conservation projects



11 communities in India produce sustainable cashmere and preserve wildlife on their lands



Snow leopard-friendly dairy producers in Mongolia are protecting 1,117 km² of snow leopard habitat



8,268 households from 52 communities in Pakistan participated in our snow leopard-friendly livestock vaccination and healthcare program

COMMUNITY-BASED CONSERVATION PRESERVES BIODIVERSITY

Snow Leopard Trust continues to collaborate with local and indigenous communities to co-create strategies and solutions to advance sustainable livelihoods and enable coexistence with wildlife.

These partner communities are increasingly engaged in multi-pronged programs which reinforce resilience, uphold their rights as local land stewards and ensure that conservation initiatives work for people as well as snow leopards.



69,321
SQUARE KILOMETERS OF SNOW LEOPARD HABITAT
PROTECTED BY OUR COMMUNITY PARTNERS



WOMEN LEADING THE WAY AS SNOW LEOPARD CHAMPIONS

The importance of women in conservation cannot be overstated. Our award-winning Snow Leopard Enterprises (SLE) program harnesses that potential to foster people's coexistence with snow leopards and other wildlife. While this women-led initiative promotes the production and sale of handmade products to augment livelihoods, **participating artisans and communities are also actively involved in conservation actions to protect snow leopards and other species within Community-Responsible Areas (CRAs).**

YOUR SUPPORT EMPOWERS WOMEN THROUGH SLE



Snow Leopard Enterprises offers women an opportunity to contribute to local conservation decision-making. It has been instrumental in putting women at the forefront of snow leopard conservation in their communities since its inception 20 years ago.

WOMEN ENGAGING IN WIDER CONSERVATION PROGRAMS

26

Communities with women heading conservation programs

62

Women engaged in the production of dairy goods

11,527

Total dollar value of cheese products sold

1,087

Community members joined conservation workshops

10,061

Households engaged in SLE, livestock insurance, corral construction and livestock vaccination programs



SHINING A SPOTLIGHT ON UNSUNG HEROES

Thanks to You, We are Supporting Rangers on the Frontlines

Committed wildlife guardians are crucial to biodiversity conservation in Asia's high mountains. They often risk their lives to protect wildlife for very little pay. These brave individuals are the proud custodians of a natural treasure that enriches all our lives - the elusive snow leopard.

Snow Leopard Trust and our partner, Snow Leopard Foundation in Kyrgyzstan, collaborated with the Kyrgyz Government to create a program to train, celebrate and reward those who serve on the frontlines of conservation. The Citizen-Ranger Wildlife Protection Program helps support these defenders of nature and encourages local communities to work with them to protect their native wildlife.

20 rangers, specialists and citizens in Kyrgyzstan recognized for their dedication to wildlife conservation

17,436 km2 of snow leopard habitat patrolled by trained rangers in Mongolia and Kyrgyzstan

41 rangers from 31 communities were trained in patrolling and monitoring wildlife



GROUNDBREAKING RESEARCH

In 2022, we successfully GPS-collared three snow leopards and three ibex.

Our collaring of ibex, started in 2018 in Tost, Mongolia, is the first time that Siberian ibex have been GPS-collared. To date, we have collared 35 snow leopards and 11 ibex in our Long-term Ecological Study.

With collar data from snow leopards, ibex and domestic goats, we are learning how snow leopards use the mountains in relation to the movement patterns of their wild prey and of livestock herds. This information can help us better understand snow leopard ecology and their livestock predation behavior.

LONG-TERM ECOLOGICAL STUDY ADVANCEMENTS IN 2022

13,640
km² of snow
leopard camera
trap surveys



Two wild prey
surveys in
South Gobi of
argali and ibex



Distance sample
survey of
goitered
gazelles



Thanks to your support of our Long-term Ecological Study, now in its 15th year, we are continually evaluating the threats and conservation policies required to ensure the snow leopard's future. Together, we are building a more complete assessment of snow leopard ecology and behavior to help shape global conservation efforts to protect this iconic predator.

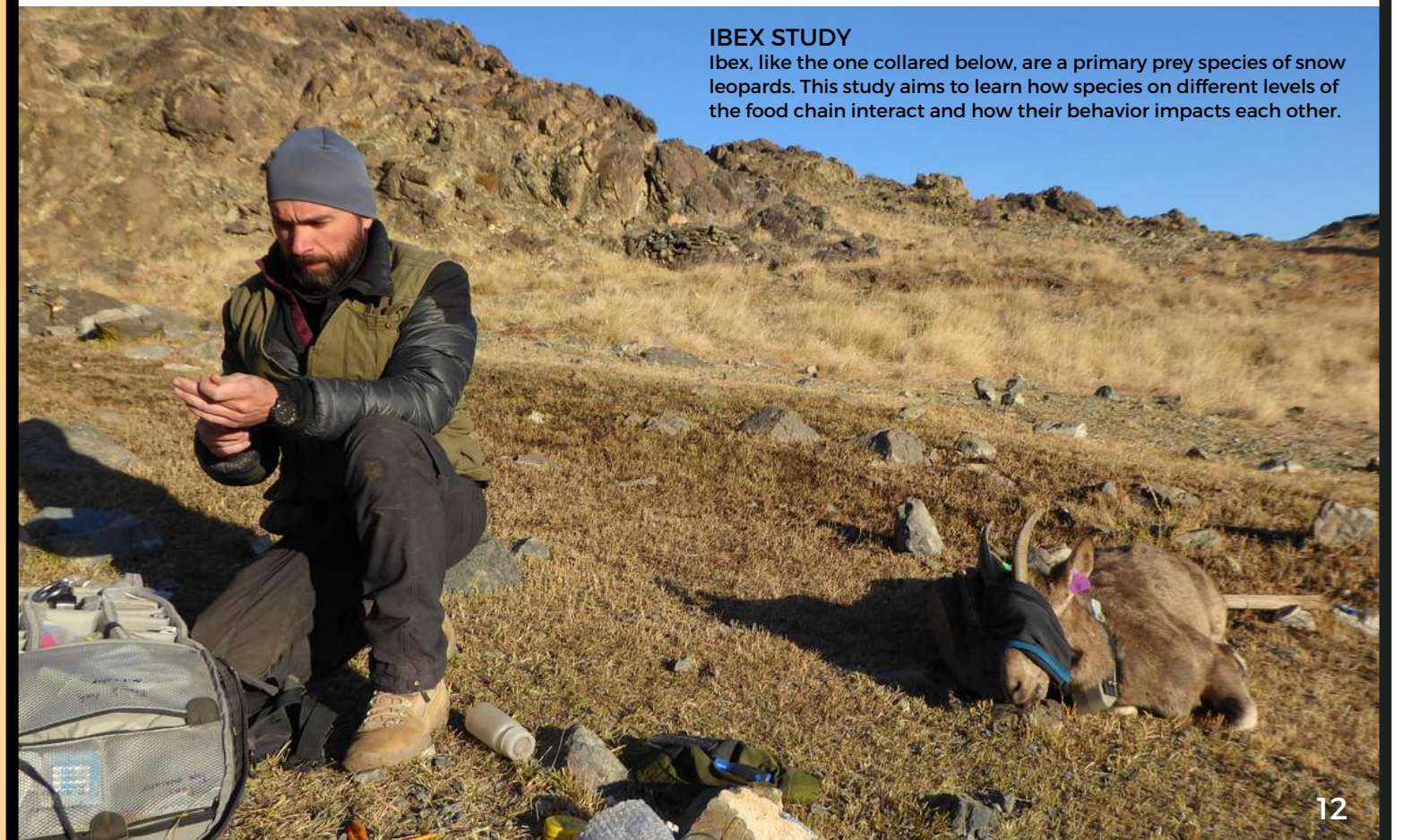
THE MISSING LINK IN OUR COLLARING STUDY

The snow leopard known as Presnel is the granddaughter of Agnes, daughter of Dagina and mother of Sar, all of whom have already been collared and tracked. With Presnel's collaring in 2022, we're now gathering valuable data on an unprecedented **four generations** of one family, including insight into average litter sizes, frequency of pregnancies, dispersal age, home ranges and more.



IBEX STUDY

Ibex, like the one collared below, are a primary prey species of snow leopards. This study aims to learn how species on different levels of the food chain interact and how their behavior impacts each other.



2022 SNOW LEOPARDS ON-CAMERA IN TOST, MONGOLIA

21

Adult snow
leopards

13

Adult female
snow leopards

8

Adult male
snow leopards

6

First-year
cubs

3

Sub-adult
cubs

9

Total cubs
on camera



RESEARCH IN ACTION

Our well-placed research cameras again captured the tailless male snow leopard seen for the past three years. The fact that this cat continues to hunt successfully without the stabilizing help of its trademark tail reinforces how resilient this elusive species is.



We published **five scientific papers in 2022 based on findings from or related to the work done through the long-term study in Tost** and are now up to a total of 34 papers since the study started in 2008.

With your support, our publications provide the scientific world with ground-breaking information on snow leopard ecology, behavior and best practices on snow leopard research and conservation actions.

SCIENTIFIC ADVANCEMENTS YOU MADE POSSIBLE

Our team published a total of 28 research papers in international peer-reviewed journals in 2022.

These significant publications provide insights on snow leopard ecology, genetics, habitat suitability, conservation strategies, climate change impacts, human societies and community-conservation initiatives across the major mountain ranges of Asia. The geographical regions covered in this research include the Himalayas, Pamirs, the Altai mountains and the Qinghai-Tibetan Plateau, and encompass a wide array of topics including:

Snow Leopard Ecology and Conservation

- Understanding snow leopard distribution and occupancy in the Pamir Mountain range
- Comprehensive body measurements and characteristics of wild snow leopards
- Understanding snow leopard activity patterns
- Spatial capture-recapture models for snow leopards' population assessment
- Markhor population study and conservation efforts in Northern Pakistan
- Disease transmission and livestock practices in Western Indian Himalayas
- High-resolution genomes of big cats for conservation research
- Risks faced by red foxes scavenging on snow leopard kills

Wildlife Crime and Illegal Hunting

- Impact of COVID lockdown on illegal wildlife hunting in India
- Illegal hunting and trading of snow leopards in Pakistan

Conservation Engagement and Initiatives

- Successful engagement of women in conserving large carnivores
- Governance of ecosystem services in Kibber village, Trans-Himalayas
- Enhancing early-career researchers' engagement in science-policy interfaces
- Coexistence strategies for snow leopards amidst human land use activities
- Factors shaping herders' tolerance of snow leopards in China
- Community initiative to conserve wolves through trapping pit deactivation and Stupa construction

Ecosystem Services and Climate Change

- Impact of economic incentives on grassland restoration
- Valuation of provisioning ecosystem services and understanding climate change impact in Pakistan's Gurez Valley

Risks and Ethical Considerations


- Insights into telemetry studies and ethical considerations
- Risks of infectious diseases and zoonoses in High Asia





WILDLIFE & COMMUNITIES THRIVING TOGETHER

Our long-standing conservation programs put local communities at the heart of solutions. These valued partners play a vital role in co-creating and implementing conservation actions that secure their livelihoods while protecting wildlife. Predator-proof corrals mitigate livestock losses and community-managed livestock insurance initiatives provide peace of mind and a safety net for herders.

45 COMMUNITIES IN 4 COUNTRIES

MAINTAINED 306  **PROOF CORRALS**

 **64 NEW OR IMPROVED CORRALS**

PROTECTING 16,435 

SAFEGUARDING 2,114 HOUSEHOLD LIVELIHOODS

Because of you, these collaborative programs rooted in local knowledge pave the way to coexistence between people and wildlife.

10 GRAZING-FREE RESERVES

Communities in India protected 508 km² of pastureland to enable the recovery and restoration of habitat, wild prey and snow leopard populations.

CROP PROTECTION IN 9 VILLAGES

11 households in India helped 290 families keep wild ungulates away from their crops, reducing potential retaliatory threats to snow leopard prey species.



IGNITING A PASSION FOR CONSERVATION

Conservation Education

It's human nature to protect what we love. That's why the conservation education initiatives you support are designed to create awareness about the value of nature and inspire positive attitudes toward wildlife. These programs include children's eco-camps, annual Snow Leopard Day celebrations, conservation newsletters for herder communities and other local stakeholders and educational materials for schools including lectures, videos, posters and environmental WhatsApp groups for teachers and students.

1,200+

Children reached through education programs including eco-camps where they spotted ungulates, identified local plants and birds and learned how climate change is affecting their landscapes.

65

Communities across snow leopard habitat benefited from multiple in-person and virtual eco-camp and conservation education programs you made possible.

24

Nature Clubs hosted through local schools offered students opportunities to meet others interested in conservation and share their love of snow leopards and the environment.

1,500

People from 16 herder communities in Mongolia participated in Snow Leopard Day celebrations including field trips, art competitions and discussions about threats to snow leopards.

40

Skilled teachers participated in and enriched the programs with their education background, supporting a deeper understanding and love for nature and biodiversity.

105

Communities distributed newsletters in Mongolia and India with information about local conservation issues, agricultural and resource management and unusual snow leopard encounters.

HOW YOU HELP FOSTER COEXISTENCE

Livelihood enhancement programs help communities improve their well-being, better withstand snow leopard predation losses, build resilience and increase tolerance



439

Households participating in community-managed livestock insurance programs



83

Members from local and indigenous communities trained to produce, market and sell cheese, yoghurt and ghee



190

Flourishing beehives established to supplement incomes for 58 community members

8,200

Seedlings planted in sustainable forestry livelihood enhancement program



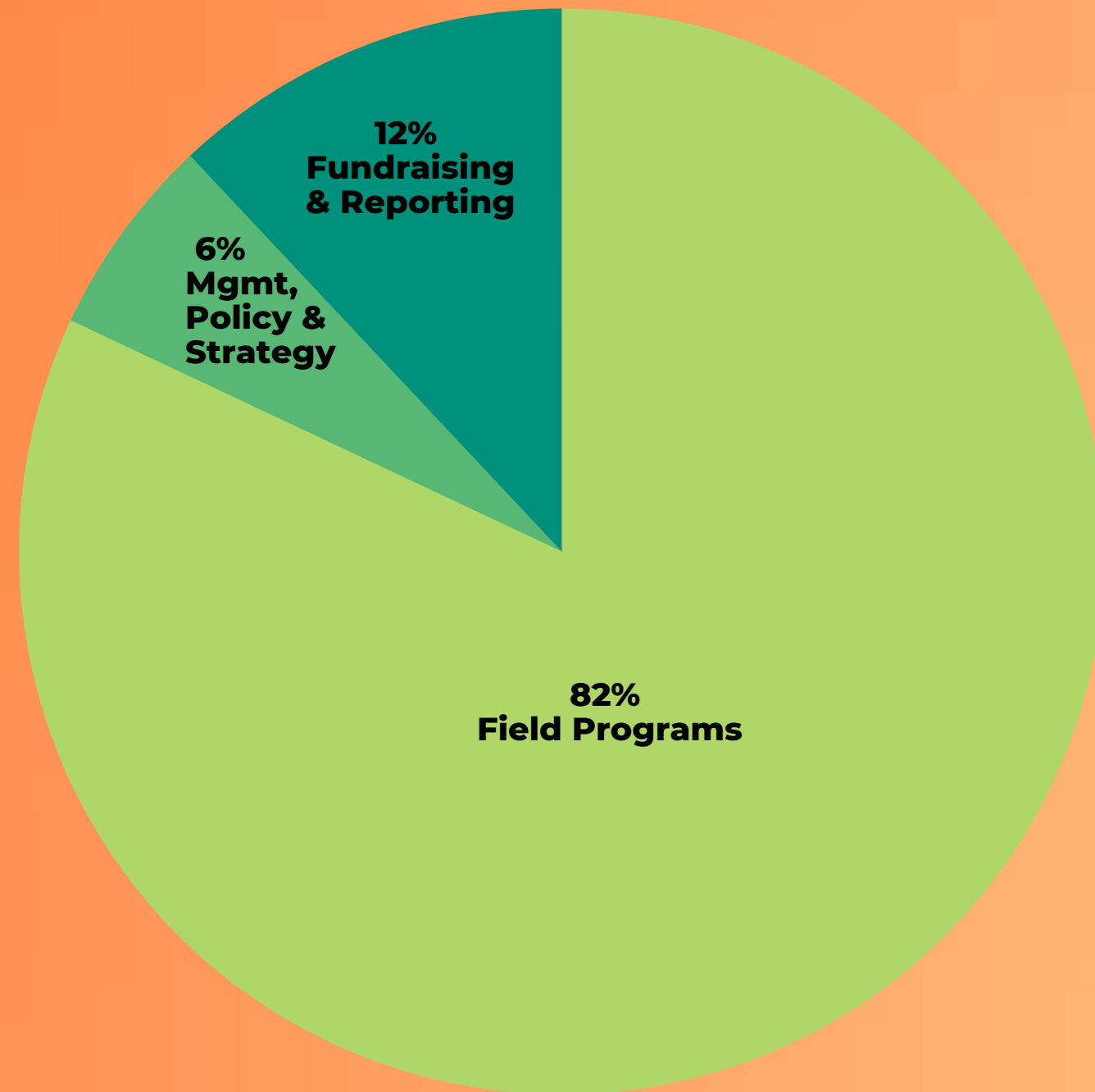
11,109

Households benefitted from multiple livelihood enhancement programs

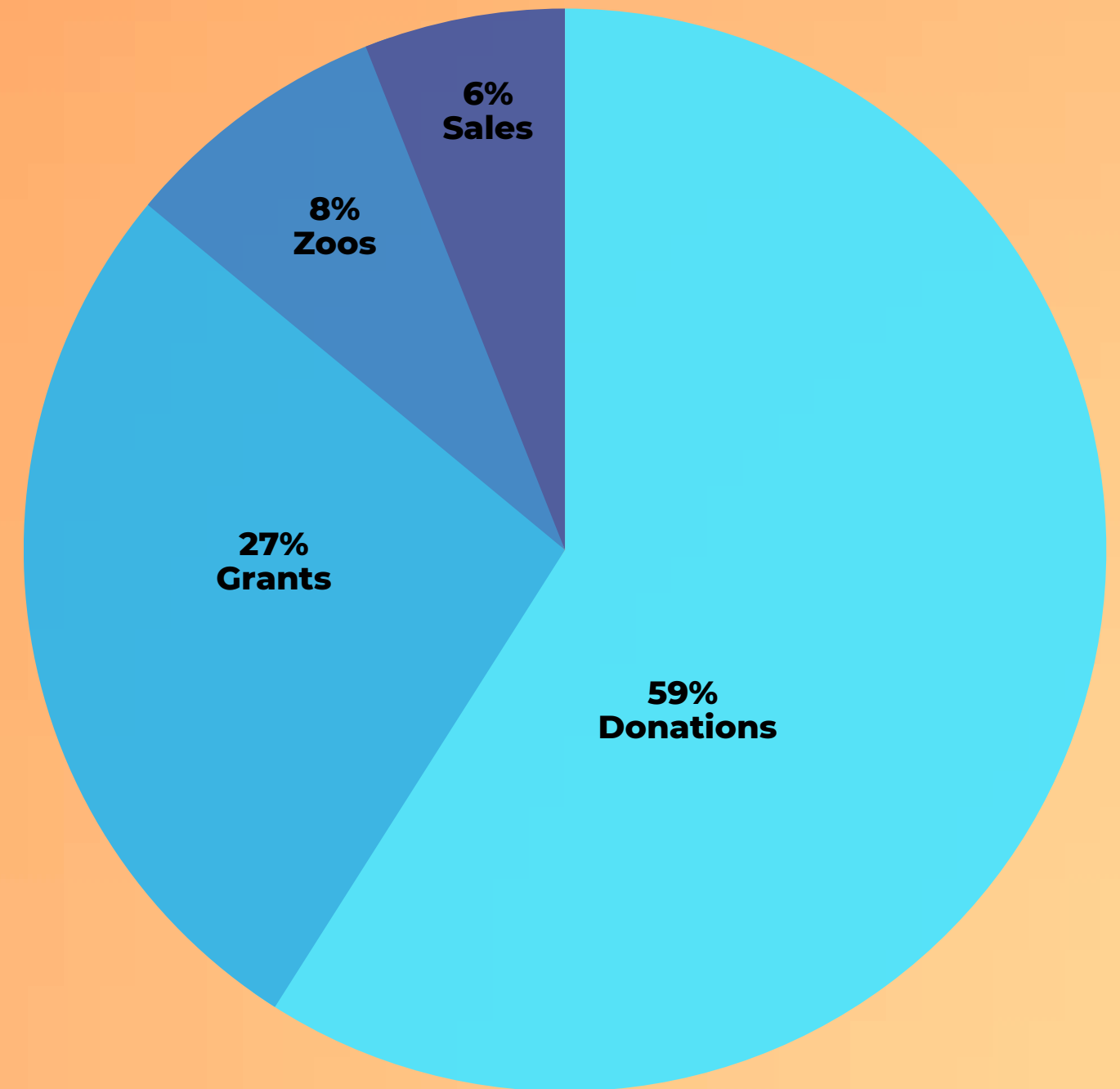


FINANCIALS

These numbers are based on unaudited financial statements and are subject to change.
The 2022 Audit Report/Form 990 will be published on snowleopard.org when completed.
Grant revenue includes \$48,729.00 of deferred revenue.



Expenses \$2,683,367.59



Revenue \$2,715,646.55

CONSERVATION UNITES US

We are grateful to YOU and people all over the world who are taking action to protect snow leopards. From rangers to herders to #Strides4SnowLeopards participants to eco-camp students to beekeepers, **you are all making a difference.** Your passion and commitment fuel every success story. **Thank you for your dedication to snow leopard conservation.** **We are honored to have you on our team.**

2022 CONTRIBUTORS

[Conservation Partners \(Major Donors\)](#)

[Individual Donors](#)

[Team Snow Leopard \(Monthly Giving Program\)](#)

[Foundations, Businesses, Governments & Orgs](#)

[Zoo Partners](#)

[Volunteers & Special Thanks](#)

[GSLEP Partners](#)

[Staff, Collaborators, Board of Directors](#)

THANK YOU TO OUR PARTNER ORGANIZATIONS

China - Shan Shui Conservation Center

India - Nature Conservation Foundation

Kyrgyzstan - Snow Leopard Foundation Kyrgyzstan

Mongolia - Snow Leopard Conservation Foundation

Pakistan - Snow Leopard Foundation Pakistan

Photos courtesy of: Our partner organizations and Prasenjeet Yadav, Sascha Fonseca, Behzad Larry, Gaurav Kalbhor, Ewaso Lions & Anthony Ochieng and our #Strides4SnowLeopards family.





BE PART OF THE SNOW LEOPARD BUTTERFLY EFFECT

Whether you're a long-time supporter or you've just started your conservation journey with us, we're thankful you're part of our snow leopard family.

There are many ways to flap your metaphorical wings and make an impact in snow leopard conservation. If you're so inspired, please consider the options below.



Make a contribution to help fund our research and conservation programs



Join Team Snow Leopard as a monthly supporter to make an even bigger impact



Honor loved ones with a donation to snow leopard conservation in their name



Leave a lasting legacy through your will, trust, or other estate plan



Take part in our #Strides4SnowLeopards event to raise awareness for snow leopard conservation and climate action



Sign up for our monthly E-News and share it with friends to increase our reach.

snowleopard.org/take-action

THANK YOU!



SNOW
LEOPARD
TRUST

4649 Sunnyside Ave. N.
Suite 325
Seattle, WA 98103
206-632-2421
info@snowleopard.org
snowleopard.org

